



DL.3
DIGITAL LIGHT

High End Systems Introduces DL.3™

The newest addition to, and the next generation of, its line of digital lighting products.



High End Systems not only started the digital revolution, we also offer the widest digital lighting product mix of any manufacturer, priced and scaled for any budget and solution. The DL.3 digital light represents the 4th generation of digital lighting products from HES and is the flagship addition to the product line, which includes the Orbital Head, Axon Media Server and DL.2 digital light.

System

- DL.3 software based on Windows XP and DirectX technology
- Powerful Content Management and Configuration software can remotely manage multiple DL.3 fixtures
- Integrated Sony camera with Super HAD image sensor technology and infrared illuminator provides live video input and output from fixture location.
- Supports importing of custom content including: 3D objects, media files, still images.
- DMX512 and Art-Net support
- Remote software upgrade capability
- Royalty-free stock digital art collection featuring more than 1,400 lighting-optimized files
- RGBHV, SDI and S-Video connections accept a wide range of media device inputs

Hardware

- 17 motion parameters for mechanical fixture control include:
 - mechanical iris adjustment to full black-out
 - 400-degree pan and 240-degree tilt movement
 - DMX control of projector zoom and focus
 - DMX control of vertical lens shift
 - DMX control of camera functions
- Camera provides:
 - optical + digital zoom to increase image up to 216X
 - options for 1-30 frame captures per second
 - vertical and horizontal image invert
 - black and white, color negative and freeze frame
 - white balance including red and blue gain control
- Infrared illuminator allows video capture even in blackout settings
- Remote video input and output switching let you select live video from external source including another DL.3 fixture's camera feed
- Full color display and preview monitor/menu functions
- Powered by an Intel Core2 Duo 2.4 GHz processor with an ATI HD2900 Graphics Processor

- Gigabit Ethernet for fast content uploading and multiple fixture synchronization
- USB Port for optional Wireless Content Management Access capabilities

Graphics Engine

- Simultaneous playback of three discrete media streams on separate 2D/3D objects
- Multiple modes for synchronizing all networked DL.3 fixtures
- 30 object parameters give you graphic controls for each individual media stream including:
 - a choice of multiple play modes and play speeds
 - the ability to define any segment of a video loop including Scrub capability
 - multiple color mixing and visual effects that can be combined any way you choose
 - variable opacity to allow for crossfading or dissolves between media streams
 - full control of image rotation, positioning and scaling on X,Y and Z axes
 - visual modes that let you control brightness and contrast to optimize content
 - video input or camera capture you can apply to 2D/3D objects
- 35 global parameters provide graphic controls to the composite image created by up to 3 media streams
 - intensity overlays the opacity control to provide system-wide intensity level
 - overall image color mixing applied to composite media stream image
 - color effects including edge colors allow for combined image color mixing
 - multiple mask selections with edge fading and strobe effects
 - Chromakey effects to layer any content by keying on any color/mix to make transparent
 - edge fading for creating montages
 - keystone correction on output projection
 - viewpoint controls provide ability to change viewing angle/perspective on images

- SDI Input/Output
- New Lens Options
- Remote Lens Shift
- 6500 Lumen 3-Chip LCD Projector
- Fully integrated digital media server
- On-board industrial-grade Nightvision camera and Infrared Illuminator
- On-board Infrared Emitter
- Content Management Application intelligently manages digital media files over Ethernet from Mac or PC
- High 2000:1 Contrast Ratio
- Full Color Menu System
- True 3D graphics engine

HIGH END SYSTEMS



LIGHTING WORLDWIDE

HIGH END SYSTEMS, INC.

2105 Gracy Farms Lane • Austin, Texas 78758 USA
Austin: 1.512.836.2242 • Los Angeles: 1.818.947.0550
www.highend.com

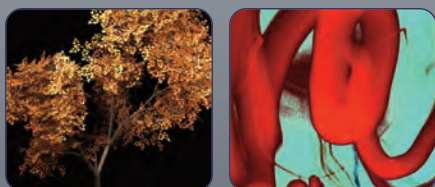
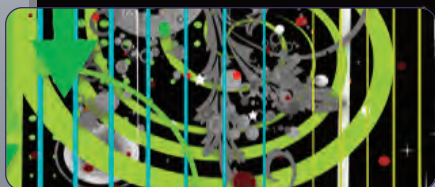
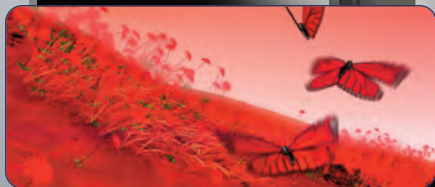
International and U.S. Patents approved and pending. Specifications subject to change without notice. Certain specifications may be the result of future software releases. For a complete list of the issued patents and patents pending contact High End Systems. ©2008 High End Systems, Inc. 021508



DL.3



Thousands of Digital Media Files -- Still and Video



lens options

Two optional lenses are available for longer throw projection applications



2.4-4.3:1



4.3-6:1

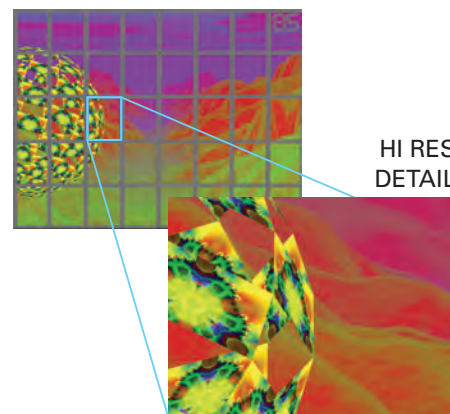
collage generator

for EDGE BLENDING

- Create seamless images from multiple DL3s and/or Axons
- Ability to select variable number of fixtures and panorama orientations
- Synchronized playback and control of multiple units as one large single unit

This software feature for DL3, DL2 and Axon has been improved to offer a larger projection with sharper images and a greater than High Definition resolution. Collage Generator now supports any configuration up to 8x8 arrays. Make a horizontal, vertical or central panoramic projection and increase effective screen luminance. Most panoramas can be configured in under 25 minutes.

8 X 5 PREVIEW



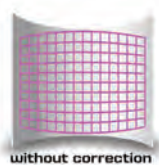
HI RES DETAIL

curved surface

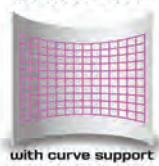
SUPPORT

Corrects for shape distortions when projecting onto surfaces that are not flat.

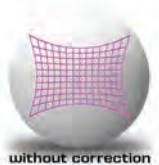
- Project DL3 onto convex or concave cylinders, angular screens, spheres and disk-shaped surfaces.
- Control the amount of correction needed, as well as control the vertical and horizontal center points of the image.



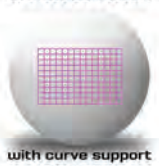
without correction



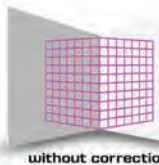
with curve support correction



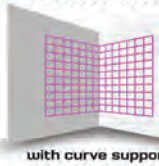
without correction



with curve support correction



without correction



with curve support correction

effects

for your creative toolbox

Faux LED

Divides image into a grid of circles to mimic an LED wall

Pixelation

Divides image into rectangles using center pixel color of each "box" as its color

Zoom Blur

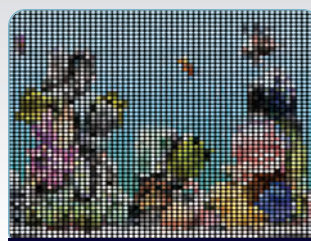
Zooms into a position on the image with a multi-image blurring effect

Also available:

Image Scale And Rotate, Pan and Scan, Shake n' Bake, Film Roll, Texture Rotation, Drop Shadow, Faux Tile, Fuzzifier



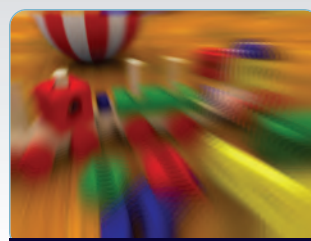
ORIGINAL



FAUX LED



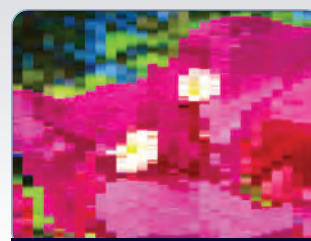
ORIGINAL



ZOOM BLUR



ORIGINAL



PIXELATION

SDI input/output



coming soon

DMX-CONTROLLED SDI SWITCHER

camera

Remote control camera network



The DL3 digital light is equipped with an on-board camera that is controlled by DMX. So, a rig full of DL3s provides you a remote control camera network. Imagine capturing images from any DL3 and sending that video to your IMAG Screen. That live video can be sent to any video output device including another DL3.



On-board menu system with preview and diagnostics monitor



High End Systems Introduces

DL3

DIGITAL LIGHT

The Next Generation in Digital Lighting

The DL3 digital light with integrated media server takes projection technology to the next level with many exciting new features.

DL3 is equipped with a **6500 lumen 3 chip LCD projector**, making it the highest output for a 3 Chip Digital Light. A high 2000:1 contrast ratio results in a dark 'video black.' The projection possibilities on DL3 are expanded with new optional lens accessories for longer throw projection applications. Also new in the DL3 is an SDI input/output for professional AV applications.

A new projection feature includes an innovative DMX-controlled vertical lens shift function. Using this DMX cue reduces the amount of keystone correction required to produce a normalized image.

New in DL3 is a large surface area HEPA filter used to protect the projection optics from theatrical haze and debris. This results in an extremely low cooling noise.

All that, combined with the features you're used to: Collage Generator™, integrated camera system, visual effects tools, even more high-resolution stock content libraries, and more than 1,400 lighting-optimized files.

The DL3 digital light's robust new features provide the user with a powerful visual graphics tool that can meet the expectations of today's sophisticated audiences. DL3 offers so many creative and labor-saving possibilities, it's a natural choice for a variety of markets – corporate events, concert touring, nightclubs, houses of worship – where flexibility needs are endless but time and budget are not.