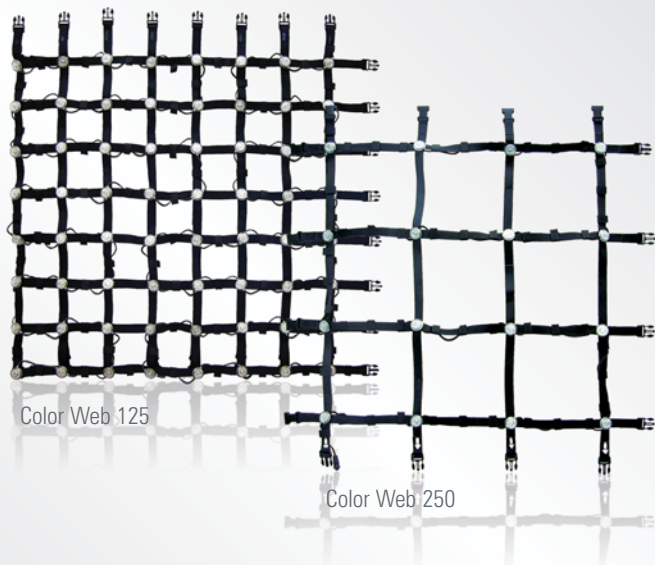




- Shape your designs with unlimited flexibility



The revolutionary Chroma-Q™ Color Web™ provides unlimited flexibility and new creative possibilities for designers when it comes to displaying low resolution visual effects.

Configure to suit your design

Featuring a unique modular design, the pliable 1m / 3'3" square panels are available in a choice of two resolutions.

The Color Web 250 panel provides 16 individually addressable colour mixing LED cells with a pitch of 250mm / 10".

The Color Web 125 panel provides 64 individually addressable colour mixing LED cells with a pitch of 125mm / 5", providing double the resolution per square metre.

Panels clip together on all four sides and can even be joined over distances using separately available interlinking cables, enabling the display area to be quickly and easily re-configured to fit almost any stage height, length or custom shape.

Overlap & light through designs

As only 20% of the Color Web 250 and 40% of the Color Web 125 panel surface areas are taken up by the lightweight, flexible webbing material, the Color Web offers unparalleled transparency for double hanging or multi-layering at distances.

It can also be lit through for maximum integration with set and other lighting elements.

Maximum creativity for minimal cost

The Color Web's versatility and choice of display resolutions has proved a winning combination with leading designers on a wide range of concert tours, television shows and special events.

The product is also extremely cost-effective, with a small system of 10 x 1m Color Web 250mm panels and PSU weighing less and being cost comparable to a standard moving light.

The Color Web 250 is the ideal solution for smaller budgets, whereas the Color Web 125 offers increased flexibility and improved results for displaying more detailed video content.

When considering the ratio of visual impact vs. equipment and trucking costs, the Color Web is arguably one of the most cost-effective visual effects solutions currently on the market.

For maximum flexibility the Web can be programmed using any DMX control device, with each cell using 3 DMX channels (RGB). It is ideally suited to integration with any DMX outputting media server to unlock its full creative potential.



Noxx nightclub, Belgium, Color Web 250



UB40 Arena Tour 2008, Color Web 125



Any Dream Will Do BB1 Show, LD Mark Kenyon, Programming Roger Williams, courtesy of Richard Martin Lighting, © Phil Dent, Color Web 250

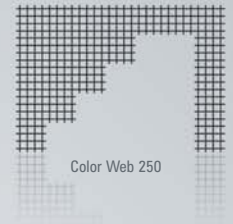
Key Features

<ul style="list-style-type: none"> ▶ Modular 1m / 3'3" square panels ▶ Re-configurable display area ▶ Pliable webbing material ▶ Semi transparent 	<ul style="list-style-type: none"> ▶ Compact and lightweight system ▶ Flexible DMX control ▶ IP65 rated (with end caps) ▶ Low cost
---	--

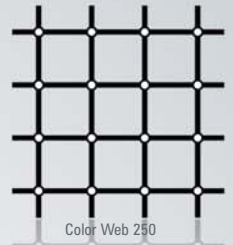
Technical Specification



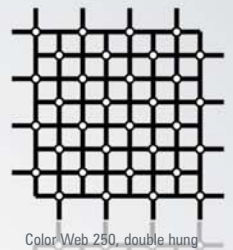
Color Web 250 Panel Specification			
Product Code	CHCW250	Cell Pitch	250mm / 10"
Dimensions	1m x 1m / 3'3" x 3'3"	Lamp Life	25,000 hours estimated average
Weight	800g / 1.76lbs	IP Rating	IP65 (when end cap used)
Connector	Mini 4-Pin in and out	Max Drop	10m drop with 4:1 safety ratio
Colour	Black	Beam Angle	120°
LED Cells	16 x Osram RGB	Point Brightness	2600 NIT



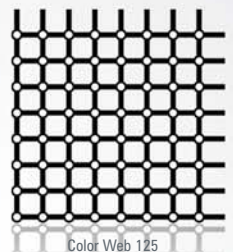
Color Web 125 Panel Specification			
Product Code	CHCW125	Cell Pitch	125mm / 5"
Dimensions	1m x 1m / 3'3" x 3'3"	Lamp Life	25,000 hours estimated average
Weight	1.84kg / 4.06lbs	IP Rating	IP65 (when end cap used)
Connector	2 x mini 4-pin in and out	Max Drop	10m drop with 4:1 safety ratio
Colour	Black	Beam Angle	120°
LED Cells	64 x Osram RGB	Point Brightness	2600 NIT



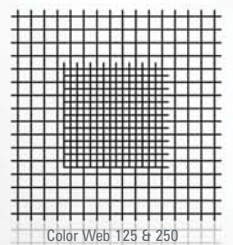
Color Web DMX Power Supply			
Product Code	CHCWPSU10DMX	Dimensions	Truss mounted 100 x 218 x 110mm / 4" x 8.6" x 4.3"
Control	USITT DMX512A RDM (480 channels), XLR5 in and through	Weight	1.4kg / 3lbs
Power	90-264V 47/440Hz 100W consumption (max), IEC chassis	IP Rating	IP20



Color Web Ethernet Power Supply			
Product Code	CHCWPSU320	Dimensions	Truss mounted 186 x 218 x 110mm / 7.3" x 8.6" x 4.3"
Control	2 x RJ45 (EtherCon)	Weight	2.5kg / 5lbs
Power	90-264V 47/440Hz 200W consumption (max), IEC chassis	IP Rating	IP20



Accessories			
CHCWSPY	Color Web spider 1m	CHCWCE6	Color Web circuit extension 6m
CHCWCE1	Color Web circuit extension 1m	CHCWME5	Color Web multicore extension 5m
CHCWCE2	Color Web circuit extension 2m	CHCWME10	Color Web multicore extension 10m
CHCWCE3	Color Web circuit extension 3m	CHCWFA	Color Web fly adapters (set of 4)
CHCWCE4	Color Web circuit extension 4m	CHCWCECAP	IP65 end cap for Color Web
CHCWCE5	Color Web circuit extension 5m		



UK & International Sales
A.C. Entertainment Technologies Ltd.
Tel: +44 (0)1494 446000
Fax: +44 (0)1494 461024
sales@ac-et.com
www.ac-et.com

Northern UK Sales
A.C. Entertainment Technologies Ltd.
Tel: 0113 255 7666
Fax: 0113 255 7676
acnorth@ac-et.com
www.ac-et.com



North American Sales
A.C. Lighting Inc.
Tel: +1 416-255-9494
Fax: +1 416-255-3514
northamerica@aclighting.com
www.aclighting.com/northamerica

Asian Sales
A.C. Lighting Asia KK
Tel: +81 (0)48-475-9377
Fax: +81 (0)48-475-9355
asia@aclighting.com
www.aclighting.com/asia